

PRO SPORTS TECH



Sports Brochure

PRO SPORTS TECH | www.prosportstech.com | 970.581.1810

TABLE OF CONTENTS

- **1** The Pro Sports Tech Advantage
- **3** Scoreboards and Effects Lighting
- **4** Indoor Tennis
- **5** Outdoor Tennis
- **6** Pickleball
- **7.** Baseball, Soccer, and Football
- **9.** Outdoor Lighting Systems
- **10.** Golf, Volleyball, and Basketball
- **11.** Indoor Basketball and Hockey

PRO SPORTS TECH ADVANTAGE

WHO WE ARE

Your Premier Sports Lighting Experts

We are dedicated to building the best sports fixtures. We raw fabricate most of our components and source worldwide for the best parts. Our light fixtures are assembled by hand, ensuring that each fixture will illuminate your facility, field, arena or stadium perfectly. Each of our fixtures are assembled right here in Colorado, USA. Create an experience your guests will never forget with our high powered sports lighting, dynamic effects and event experience lighting designed for your venue.

Construction Superiority

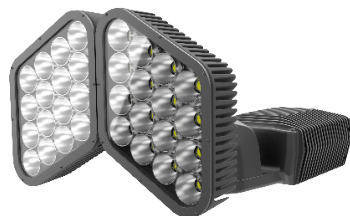
- Unparalleled heat sink technology, maximizing light output and efficiency. FEA thermal reporting and TM21 reports available.
- Cast aluminum housing with MAXcoat powdercoat finish for harsh environments.
- Designed with a sloped and tapered housing making it difficult for snow and rain to collect and pool regardless of fixture orientation and tilt.
- All internal high temperature coated wiring. System design features no exposed wires or components.
- Low EPA and weight correlation to output making retrofitting easy without structural engineering.

Maintenance Ease

- Fully field replaceable components for all parts.
- Full set of parts provided with system purchase.
- Field upgradeable for for future technology advances.



1 Module



2 Module



3 Module



4 Module



Optical Precision

- ULTRAstar high impact tempered glass to maximize optic performance and improve efficiency. Glass testing documentation available.
- Scalable CRI up to 97 for crystal clear 8k broadcasting
- Optics arrays which feature varied independent board optics making pole kicker and ball tracker lights unnecessary, saving cost.

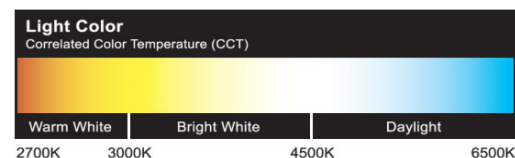
Controls Beyond

- 0-10v dimming, DMX, mesh, and wireless fixture and system control options available, please contact for details.
- IOT and AV integration capability
- Field adjustable remote drivers can be mounted with fixture bracketing or in separate pole, catwalk or nearby mounted enclosures.

System Warranty & Design

- Lowest total cost of ownership of any sports fixture and system at the professional level.
- 5 year warranty standard, 10-30 year warranty available with system builds.
- 200,000 hour LEDs, 100,000 hour drivers, actual rating will depend on fixture build and ambient temperature of installation.
- Designed, Engineered and Manufactured in Colorado, USA.

CCT Scale for Reference



SERVICES WE PROVIDE

Custom Quotations

For each new project we do we provide a custom quotation with a breakdown of products. This allows us to provide you with completely transparent, factory direct pricing.

3D Modeling

- Realistic and Accurate Design Modeling (Free!).
- Coverage maps.
- Isolation area designs.
- Video presentations of 3d models with detailed light breakouts.

Installation Management

- Licensed EC/GC project management.
- Stamped engineered drawings.
- Stamped loading calculations.
- Full turnkey projects.

Project Support

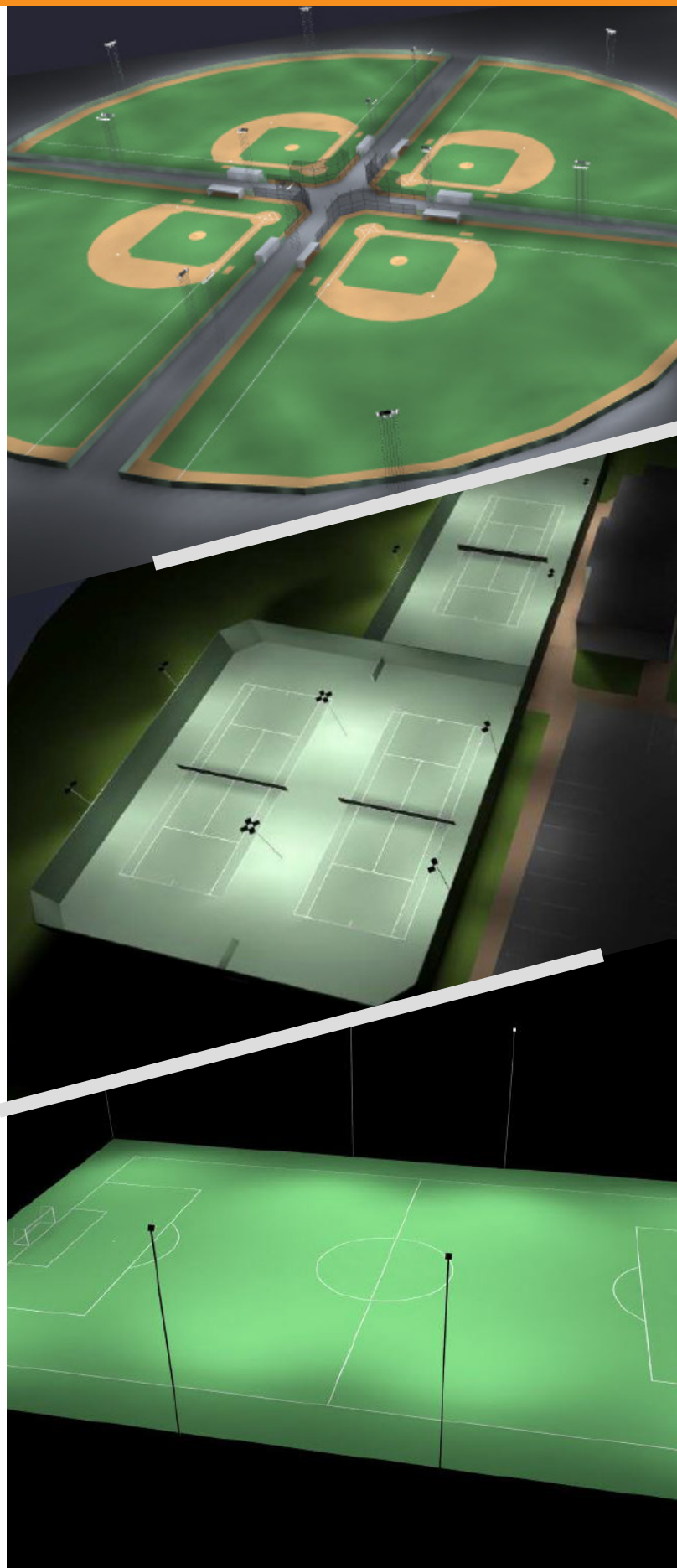
- We provide detailed aiming diagrams and lighting maps.

During Project

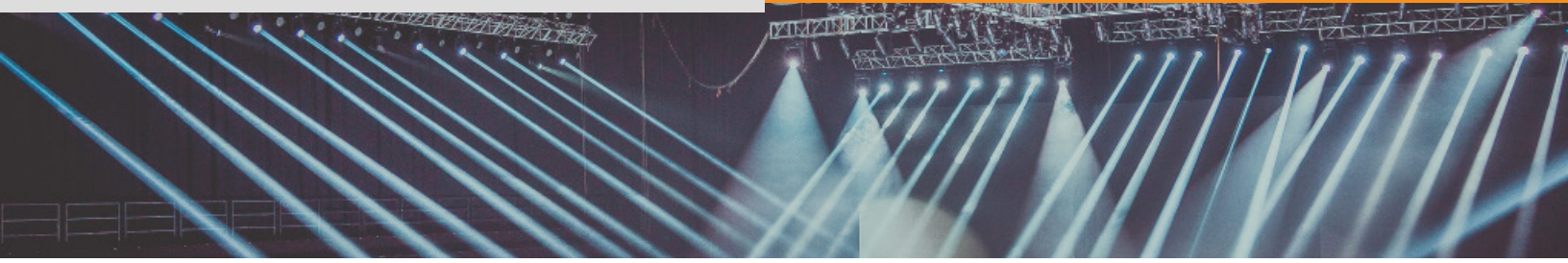
- On-site and remote support.
- Post project - email, text, video chat, phone and on site support.
- Unrivaled dedication to each project.

Post Project

- Scene creation.
- Subscription based content creation with monthly or event based designs.
- Admin monitoring.



SCOREBOARDS AND EFFECTS LIGHTING



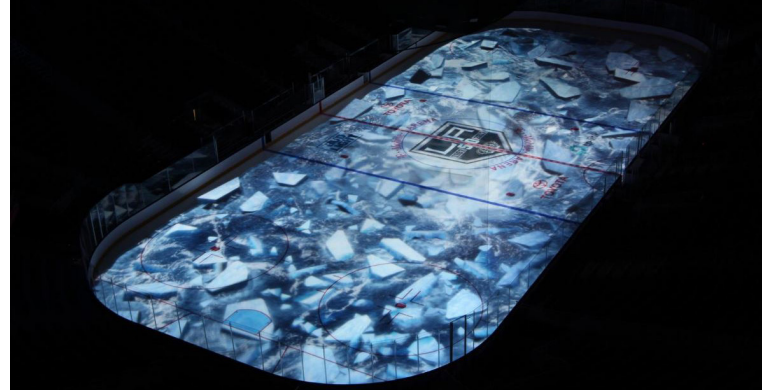
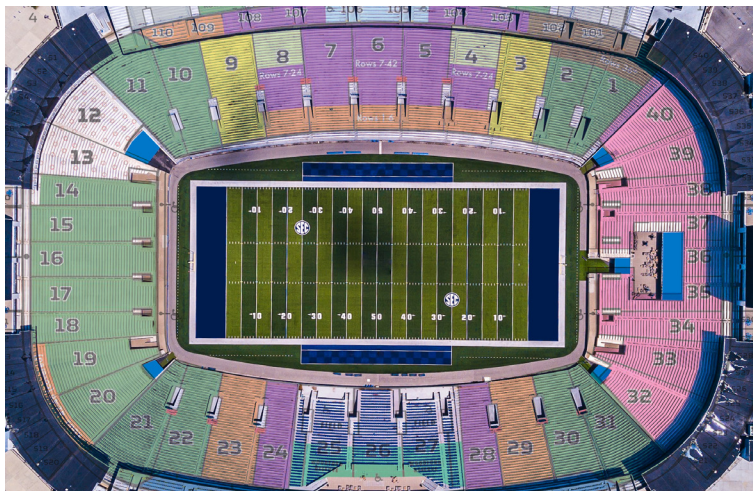
Scoreboards and Video Boards

We provide the most advanced scoreboards and video boards for your venue. Our scoreboards that can be easily programmed to highlight players and show the score, while our advanced video boards can be used for high quality graphics to create beautiful visualizations during concerts or other events.



Color Effects System

Create color effects inside and outside of your stadium with our unique color effects system. We can program this system to map seats in your stadium so your guests know exactly where their section is, as well as illuminate the exterior of your building.



Projection Systems

Transform any surface, field, floor, roof or wall with a custom projection system. Visuals can mimic wood, metal doors, art pieces, various prints, and incorporate mixed perspective tricks and animations to immerse viewers in a different world.



Infrared Interactive Applications

Incorporate your audience into the fun and get them involved with specific stadium seats designed to light up when an infrared beam is aimed onto it. This process can be used on single areas or scaled out to the entire stadium to create a light show like no other.

INDOOR TENNIS

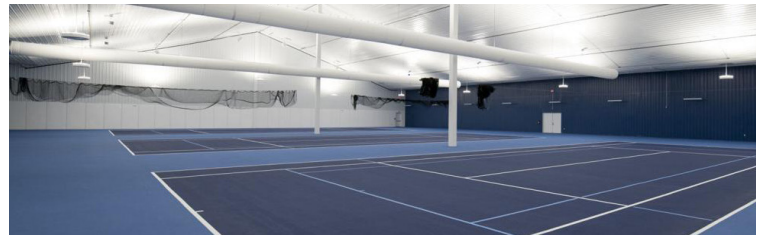


Indirect System

The **SUNflare** Indirect LED fixture system is a single point suspended high bay arrangement. The super high lumen output lumen is designed for indoor athletic facilities where glare can be problematic. The fixture uses patented heat sink technology to drive more light without adding weight. The fixture allows greater spacing and less fixtures in recreational settings. It's also perfect for professional sports facilities creating professional light levels without disrupting play. As an added benefit, customized and interchangeable graphics displays are included with the system increasing branding or providing revenue generating opportunities.

3 Key System Advantages

1. Ultra low glare system capability
2. Professional level systems
3. Ideal for high level competition up to Tour Pro level



Semi Direct System

The Semi Direct system uses 8' linear fixtures with diffused lensing to minimize glare and maximize lighting in a situation where lower roof heights and indirect light is not possible. The system requires more distribution points and lower outputs as to not interfere with high level play. This is a great system for facilities looking to keep expenses minimal while increasing light levels and efficiency

Arena System

Our arena system uses our **DIAMONDpro** light. The high precision reflector optics minimize glare and maximize targeted light within the court. Arena projects require the highest standard possible and this package delivers the most complete lighting in the industry. With infinite control capabilities, AV tie ins, and custom RGB capabilities, we can turn any tennis arena into a true sporting performance venue.

EA Technologies - Pro Sports Tech Indoor Tennis Systems

Lighting Standards For Outdoor Courts

Court Type (Pole/Fixture)	Horizontal Illuminance (LUX)/(FC)	Color Temperature (K)	Color Rendering Index (Ra)	Uniformity (U)	ITF/USTA Class Rating	Usage
Class 1 ITF	> 750/69.6	>4000	>80	<1.5	ITF 1	Lower Professional
Class 2 ITF	>500/46.4	>4000	>65	<1.5	ITF 2	Club/Competitive
Class 3 ITF	>300/27.8	>4000	>60	<2.0	ITF 3	Recreation
Class 1 USTA	>1345/125	Not Specified	80	<1.5	USTA 1	Upper Professional
Class 2 USTA	>807/75	Not Specified	70	<1.7	USTA 2	Club/Competitive
Class 3 USTA	>538/50	Not Specified	70	<2.0	USTA 3	Club/Competitive/Rec

Indirect System - SUNflare

Fixture Output	Fixture Count	Horizontal Illuminance (LUX)/(FC)	Color Temperature (K)	Color Rendering Index (Ra)	Uniformity (U)	ITF/USTA Class Rating	Usage
Low 400w	12	>200/20	5000	80	<2.0	ITF 3	Recreation
High 700w	8	>300/30	5000	80	<2.0	ITF2	Recreation/Club
High 700w	12	>500/50	5000	80	<2.0	ITF 1/USTA 3	Club/Lower Pro
Super 930w	12	>500/50	5000	80	<2.0	ITF 1/USTA 3	Club/Lower Pro

Semi Direct System - Linear 8' High Bays

Fixture Output	Fixture Count	Horizontal Illuminance (LUX)/(FC)	Color Temperature (K)	Color Rendering Index (Ra)	Uniformity (U)	ITF/USTA Class Rating	Usage
DP 2 - 760w	8	>400/40	5000	80	<2.0	ITF 2	Club
DP 3 - 1140w	8	>600/60	5000	80	<2.0	ITF 1/USTA 3	Club/Lower Pro

Arena System - DIAMONDpro

Fixture Output	Fixture Count	Horizontal Illuminance (LUX)/(FC)	Color Temperature (K)	Color Rendering Index (Ra)	Uniformity (U)	ITF/USTA Class Rating	Usage
Super 800w	8	>800/80	5000	80	<1.3	ITF 1/USTA 2	
DP 3 - 1140w	8	>1250/125	5000	90	<1.2	ITF 1/USTA 1	
DP 3 - 1140w	12	>1800/175	5000	90	<1.2	ITF 1/USTA 1	

OUTDOOR TENNIS



EA Technologies - Pro Sports Tech Tennis Systems


Lighting Standards For Outdoor Courts

Court Type (Pole/Fixture)	Horizontal Illuminance (LUX)/(FC)	Color Temperature (K)	Color Rendering Index (Ra)	Uniformity (U)	ITF/USTA Class Rating	Usage
Class 1 ITF	> 500/46.4	>4000	>80	<1.5	ITF 1	Lower Professional
Class 2 ITF	>300/27.8	>4000	>65	<1.5	ITF 2	Club/Competitive
Class 3 ITF	>200/18.5	>4000	>60	<2.0	ITF 3	Recreation
Class 1 USTA	>1345/125	Not Specified	Not Specified	<1.5	USTA 1	Upper Professional
Class 2 USTA	>807/75	Not Specified	Not Specified	<1.7	USTA 2	Club/Competitive
Class 3 USTA	>538/50	Not Specified	Not Specified	<2.0	USTA 3	Club/Competitive/Rec





Single Court - Pole Height Varies from 18-25'

Fixture Output	Fixture Count	Horizontal Illuminance (LUX)/(FC)	Color Temperature (K)	Color Rendering Index (Ra)	Uniformity (U)	ITF/USTA Class Rating	Usage
Low 250w	6	>200/20	5000	80	<2.0	ITF 3	Recreation
Mid 400w	6	>300/30	5000	80	<2.0	ITF2	Recreation/Club
High 600w	6	>500/50	5000	80	<2.0	ITF 1/USTA 3	Club/Lower Pro
Super 800w	6	>650/65	5000	80	<2.0	ITF 1/USTA 3	Lower Pro
Low 250w	8	>250/25	5000	80	<1.5	ITF 3	Recreation
Mid 400w	8	>400/40	5000	80	<1.5	ITF 2	Club
High 600w	8	>600/60	5000	80	<1.5	ITF 1/USTA 3	Club/Lower Pro
Super 800w	8	>800/80	5000	80	<1.5	ITF 1/USTA 2	

Double Court - Pole Height Varies from 30-39'

Fixture Output	Fixture Count	Horizontal Illuminance (LUX)/(FC)	Color Temperature (K)	Color Rendering Index (Ra)	Uniformity (U)	ITF/USTA Class Rating	Usage
DP 2 - 760w	8	>400/40	5000	80	<2.0	ITF 2	Club
DP 3 - 1140w	8	>600/60	5000	80	<2.0	ITF 1/USTA 3	Club/Lower Pro
DP 2 - 760w	12	>600/60	5000	80	<1.5	ITF 1/USTA 3	Club/Lower Pro
DP 3 - 1140w	12	>800/80	5000	80	<1.5	ITF 1/USTA 2	

Single Stadium Court - Pole Height Varies from 30-60'

Fixture Output	Fixture Count	Horizontal Illuminance (LUX)/(FC)	Color Temperature (K)	Color Rendering Index (Ra)	Uniformity (U)	ITF/USTA Class Rating	Usage
Super 800w	8	>800/80	5000	80	<1.3	ITF 1/USTA 2	
DP 3 - 1140w	8	>1250/125	5000	90	<1.2	ITF 1/USTA 1	 
DP 3 - 1140w	12	>1800/175	5000	90	<1.2	ITF 1/USTA 1	

System Advantages

- Court design places poles in areas which are cost effective and advantageous to competitive play.
- Design maximizes light illuminance inside of the court primary playing area (PPA), while minimizing spill outside of court area.
- Ultra low glare with full cut off optics
- High lumen per watt increases efficiency and reduces energy costs
- 100,000 hour life reduces maintenance costs to zero, with a possible 90+ year usability (at 3 hours per day/365 days/year)
- Instant on (no warm up period) increasing playing time, reducing energy costs and keeping court times on schedule
- 5 year warranty, 10 year warranty on system builds with controls

System Controls

- Fully Dimmable
- Motion activation available
- Wifi Controller available with remote operation
- Mechanical Timer with Astrological Timer Override Available
- Court Zoning Systems Available with Central Controller

PICKLEBALL

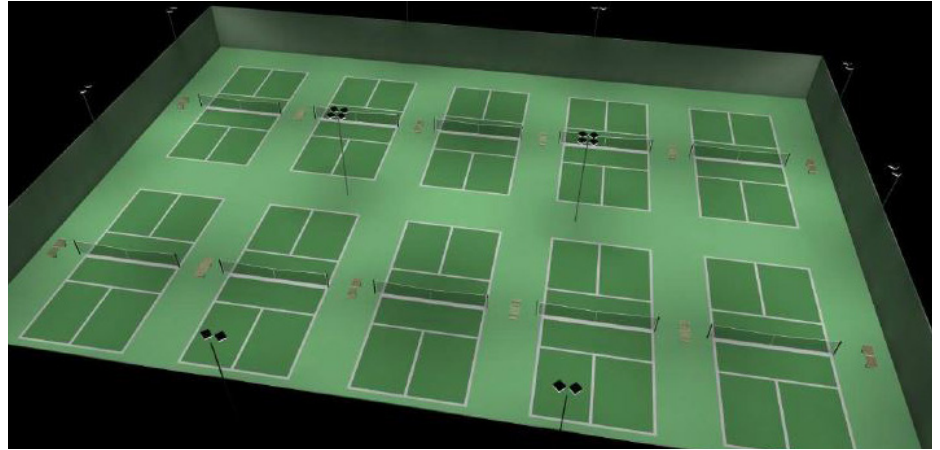


System Advantages

- Court design places poles in areas which are cost effective and advantageous to competitive play.
- Design maximizes light illuminance inside of the court primary playing area (PPA), while minimizing spill outside of court area.
- Ultra low glare with full cut off optics
- High lumen per watt increases efficiency and reduces energy costs
- 100,000 hour life reduces maintenance costs to zero, with a possible 90+ year usability (at 3 hours per day/365 days/year)
- Instant on (no warm up period) increasing playing time, reducing energy costs and keeping court times on schedule
- 5 year warranty, 10 year warranty on system builds with controls

System Controls

- Fully Dimmable
Motion activation available Wifi Controller available with remote operation.
- Mechanical Timer with Astrological Timer Override Available.
- Court Zoning Systems Available with Central Controller.



EA Technologies - Pro Sports Tech Pickleball Systems

Lighting Standards For Outdoor Courts

Court Type (Pole/Fixture)	Horizontal Illuminance (LUX)/(FC)	Color Temperature (K)	Color Rendering Index (Ra)	Uniformity (U)	Usage
Class 1 Pro	> 500/46.4	>4000	>80	<1.5	Lower Pro
Class 2 Club	>300/27.8	>4000	>65	<1.5	Club/Competitive
Class 3 Recreation	>200/18.5	>4000	>60	<2.0	Recreation

Single Court - Pole Height Varies from 14-25'

Fixture Output	Fixture Count	Horizontal Illuminance (LUX)/(FC)	Color Temperature (K)	Color Rendering Index (Ra)	Uniformity (U)	Usage
Low 250w	4	>200/20	5000	80	<2.0	Recreation
Mid 400w	4	>300/30	5000	80	<2.0	Recreation/Club
High 600w	4	>500/50	5000	80	<2.0	Club/Lower Pro
Super 800w	4	>650/65	5000	80	<2.0	Lower Pro

Quad Court - Pole Height Varies from 30-39'

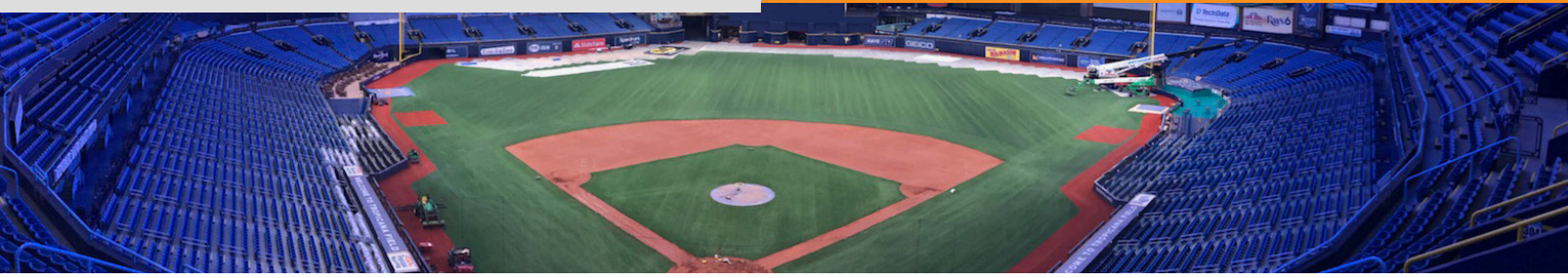
Fixture Output	Fixture Count	Horizontal Illuminance (LUX)/(FC)	Color Temperature (K)	Color Rendering Index (Ra)	Uniformity (U)	Usage
DP 2 - 760w	8	>400/40	5000	80	<2.0	Club
DP 3 - 1140w	8	>600/60	5000	80	<2.0	Club/Lower Pro
DP 2 - 760w	12	>600/60	5000	80	<1.5	Club/Lower Pro
DP 3 - 1140w	12	>800/80	5000	80	<1.5	Pro

Single Stadium Court - Pole Height Varies from 30-60'

Fixture Output	Fixture Count	Horizontal Illuminance (LUX)/(FC)	Color Temperature (K)	Color Rendering Index (Ra)	Uniformity (U)	Usage
Super 800w	8	>1200/120	5000	80	<1.3	Pro
DP 3 - 1140w	8	>2000/200	5000	90	<1.2	Pro



BASEBALL, SOCCER, AND FOOTBALL



System Design

LED

Our **DIAMONDpro** LED system is unsurpassed in the industry both in design and performance. Our LED fixture allows for maximum output with precision reflector optics in a scalable system. The system is a fully enclosed system with no exposed wires, which ensures maximum longevity in the harshest conditions.

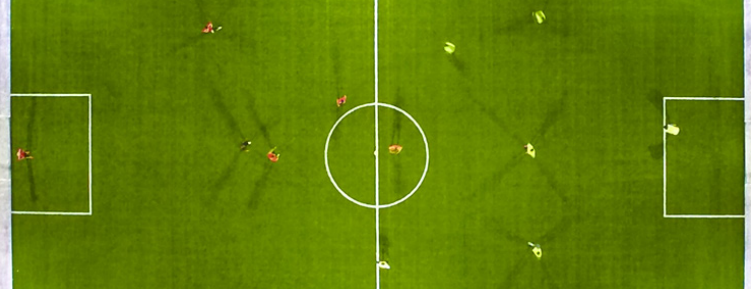
All items are fully field replaceable. Extra parts are provided with system purchase. The system can be configured as either integrated or remote driver operation. System design uses variable deep set beam optics to maximize field coverage and maintains excellent fly ball visibility without the use of up lights. No shielding is required to comply with cutoff and spill tolerances.

System advantage: Long Sustained Life, Consistent Light Levels, Precision targeted optics, Fully field replaceable components, Fully enclosed

HID

This system is for the budget conscious program who is looking to get lights onto a field. The light quality is still very good. The upside is the ultra low upfront cost. The downside is that typical relamp/reballast life cycle is about 5,000 hours. The system also use more energy and requires a warm up and hot restrike period. Despite the downside most facilities would still benefit from this system as it is often difficult to pay back the cost difference for LED.

System advantage: Low Upfront Cost, Maintains Light Standards



System Advantages

- Court design places poles in areas which are cost effective and advantageous to competitive play.
- Design maximizes light illuminance inside of the court primary playing area (PPA), while minimizing spill outside of court area.
- Ultra low glare with full cut off optics
- High lumen per watt increases efficiency and reduces energy costs
- 100,000 hour life reduces maintenance costs to zero, with a possible 90+ year usability (at 3 hours per day/365 days/year)
- Instant on (no warm up period) increasing playing time, reducing energy costs and keeping court times on schedule
- 5 year warranty, 10 year warranty on system builds with controls

System Controls

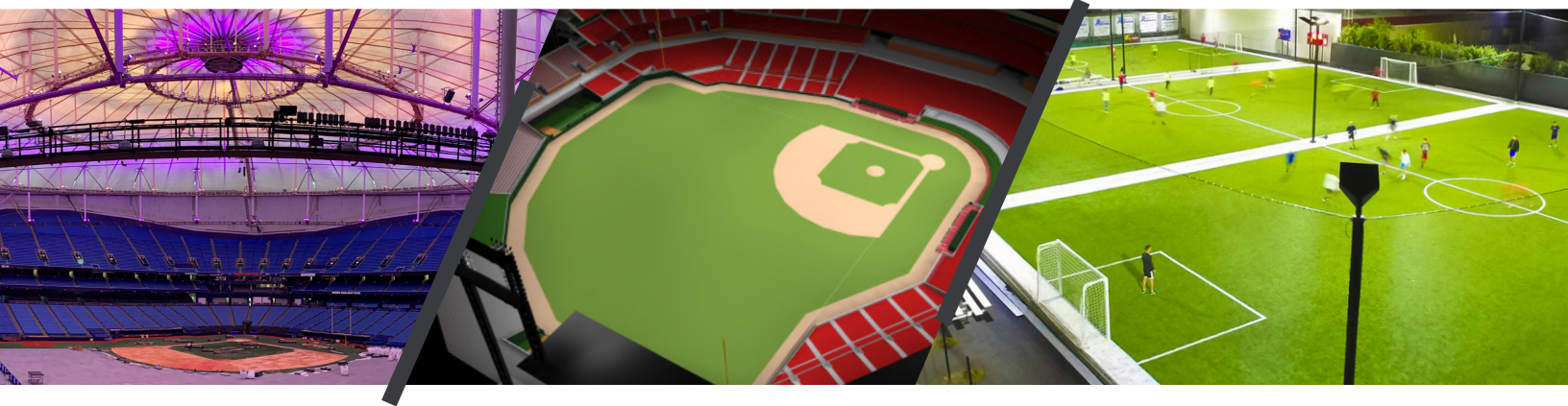
- Fully Dimmable as a group or individually controlled
- System options either 2.4 ghz mesh or Wired/Wireless DMX
- 2 way addressable
- DMX options with theater control board, RGB integration, scoreboard/AV integration, projection system integration
- Remote access with remote work stations
Wifi controller available with remote operation
- Email, text, online chat, phone and on-site support available
- On site system group training
- Static and dynamic scene setups available with system purchase
- Scene and AV content provided either per request or by subscription

OUTDOOR LIGHTING SYSTEMS

EA Technologies - Pro Sports Tech Baseball Systems

Baseball Lighting Standards							
Level	Illuminance Infield/ Outfield (FC)	Color Temperature (K)	Color Rendering Index (Ra)	Uniformity Infield/ Outfield (U)	Vertical Illuminance	Fixture Count	Poles
Recreation	30/20	5000	>70	<2.0/2.5	NA	Varies	4/6
Little League - High School	50/30	5000	>80	<2.0/2.5	NA	Varies	4/6
Collegiate	70/50	5000	>80	<1.5/2.0	NA	Varies	6/8
Minor League - Collegiate TV	100/70	5000	>80	<1.5/2.0	70/40	Varies	6/8
Pro - MLB	250/225/200	5000	>95	<1.2/1.3/1.5	175/150/125	Varies	8

Pro Sports Tech Lighting Systems								
Field Size (L/C/R)	Technology	Illuminance Infield/ Outfield (FC)	Color Temperature (K)	Color Rendering Index (Ra)	Uniformity Infield/ Outfield (U)	Vertical Illuminance	Fixture Count	Poles
200/200/200	HID	>50/30	4000	70	<1.5/2.0	NA	20	4/6
200/200/200	DP2/DP3 LED	>55/33	5000	80-97	<1.5/2.0	NA	18	4/6
300/300/300	HID	>50/30	4000	70	<1.5/2.0	NA	48	6
300/300/300	DP2/DP3 LED	>55/33	5000	80-97	<1.5/2.0	NA	36	6
350/400/350	DP2/DP3 LED	>55/33	5000	80-97	<1.5/2.0	NA	36	6
Minor	DP3 LED	>125/100	5000	90	<1.3/1.5	80/50	>100	6
Pro - MLB	DP4 LED	>300/275/250	5000	97	<1.1/1.2/1.3	>225/200/175	>400	8



EA Technologies - Pro Sports Tech Soccer Systems

Football Lighting Standards							
Level	Illuminance (FC)	Color Temperature (K)	Color Rendering Index (Ra)	Uniformity (U)	Vertical Illuminance	Fixture Count	Poles
Recreation - High School	30	5000	>70	<2.5	NA	Varies	4
Collegiate	50	5000	>80	<1.5	NA	Varies	6
Collegiate TV	100	5000	>80	<1.5	70/40	Varies	6
Pro - FIFA World Cup	200	5000	>95	<1.2	150/100	Varies	8

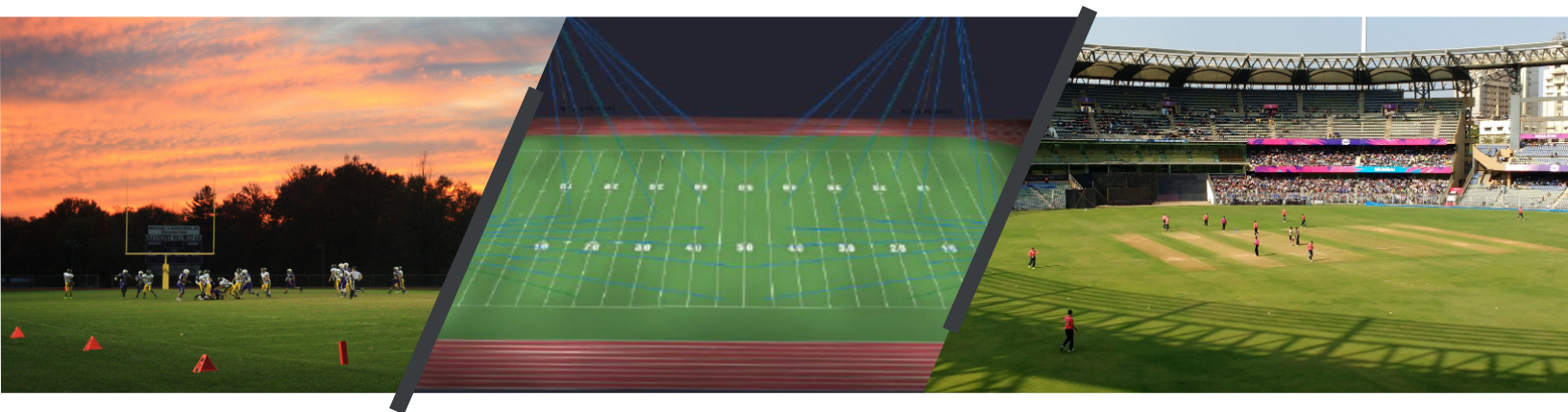
Pro Sports Tech Lighting Systems								
Level	Technology	Illuminance (FC)	Color Temperature (K)	Color Rendering Index (Ra)	Uniformity Infield/ Outfield (U)	Vertical Illuminance	Fixture Count	Poles
Recreation	HID	>30	4000	70	<2.0	NA	32	4
Recreation	DP2/DP3 LED	>33	5000	80-90	<2.0	NA	28	4
Collegiate	DP2/DP3 LED	>55	5000	80-97	<1.5	NA	40	6
College TV	DP3 LED	>125	5000	90	<1.3	75/50	>100	6
Pro - FIFA World Cup	DP4 LED	>250	5000	97	<1.1	>200/150	>200	8

OUTDOOR LIGHTING SYSTEMS

EA Technologies - Pro Sports Tech Football Systems

Football Lighting Standards							
Level	Illuminance (FC)	Color Temperature (K)	Color Rendering Index (Ra)	Uniformity (U)	Vertical Illuminance	Fixture Count	Poles
Recreation - Youth	30	5000	>70	<2.5	NA	Varies	4
High School	50	5000	>80	<2.0	NA	Varies	4/6
Collegiate	50	5000	>80	<1.5	NA	Varies	6
Collegiate TV	100	5000	>80	<1.5	70/40	Varies	8
Bowl - PRO - NFL	200	5000	>95	<1.2	150/100	Varies	8

Pro Sports Tech Lighting Systems								
Level	Technology	Illuminance (FC)	Color Temperature (K)	Color Rendering Index (Ra)	Uniformity Infield/ Outfield (U)	Vertical Illuminance	Fixture Count	Poles
Recreation	HID	>30	4000	70	<2.0	NA	44	4
Recreation	DP2/DP3 LED	>33	5000	80-97	<2.0	NA	22	4
High School	HID	>50	4000	70	<2.0	NA	72	4
High School	DP2/DP3 LED	>55	5000	80-97	<1.5	NA	40	4/6
Collegiate	DP2/DP3 LED	>55	5000	80-97	<1.5	NA	40	6
College TV	DP3 LED	>125	5000	90	<1.3	75/50	>100	6
Bowl - Pro- NFL	DP4 LED	>250	5000	97	<1.1	>200/150	>200	8



EA Technologies - Pro Sports Tech Cricket Systems

Cricket Lighting Standards							
Level	Illuminance (FC)	Color Temperature (K)	Color Rendering Index (Ra)	Uniformity (U)	Vertical Illuminance	Fixture Count	Poles
Recreation	30	5000	>70	<2.5	NA	Varies	4
Semi-Pro	50	5000	>80	<1.5	NA	Varies	6
Pro - Big Bash - World Cup	200	5000	>95	<1.2	150/100	Varies	8

Pro Sports Tech Lighting Systems								
Level	Technology	Illuminance (FC)	Color Temperature (K)	Color Rendering Index (Ra)	Uniformity Infield/ Outfield (U)	Vertical Illuminance	Fixture Count	Poles
Recreation	HID	>30	4000	70	<2.0	NA	32	4
Recreation	DP2/DP3 LED	>33	5000	80-90	<2.0	NA	28	4
Semi-Pro	DP2/DP3 LED	>55	5000	80-97	<1.5	NA	48	6
Pro - Big Bash - World Cup	DP3/DP4 LED	>250	5000	97	<1.1	>200/150	>200	6

GOLF, VOLLEYBALL, BASKETBALL



EA Technologies - Pro Sports Tech Golf Range Systems

Golf Lighting Standards								
Level	Illuminance (FC)	Color Temperature (K)	Color Rendering Index (Ra)	Uniformity (U)	Vertical Illuminance	Fixture Count	Poles	
Recreation	20	5000	>70	<3.0	NA	Varies	4	
Pro	70	5000	>80	<2.0	50	Varies	4	
Pro Sports Tech Lighting Systems								
Level	Technology	Illuminance (FC)	Color Temperature (K)	Color Rendering Index (Ra)	Uniformity Infield/ Outfield (U)	Vertical Illuminance	Fixture Count	Poles
Recreation	DP2/DP3 LED	>33	5000	80-90	<3.0	NA	16	4
Pro	DP2/DP3 LED	>75	5000	95	<2.0	>50	32	4

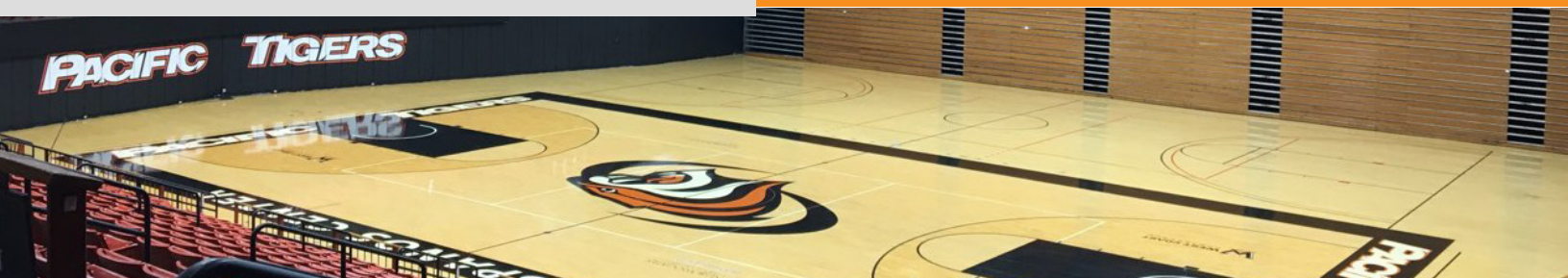
EA Technologies - Pro Sports Tech Volleyball Systems

Volleyball Lighting Standards								
Level	Illuminance (FC)	Color Temperature (K)	Color Rendering Index (Ra)	Uniformity (U)	Vertical Illuminance	Fixture Count	Poles	
Recreation	30	5000	>70	<2.0	NA	Varies	4	
Pro	70	5000	>80	<1.5	50	Varies	4	
Pro Sports Tech Lighting Systems								
Level	Technology	Illuminance (FC)	Color Temperature (K)	Color Rendering Index (Ra)	Uniformity Infield/ Outfield (U)	Vertical Illuminance	Fixture Count	Poles
Recreation	DP2/DP3 LED	>33	5000	80-90	<2.0	NA	8	4
Pro	DP2/DP3 LED	>75	5000	95	<1.3	>50	16	4

EA Technologies - Pro Sports Tech Outdoor Basketball Systems

Outdoor Basketball Lighting Standards								
Level	Illuminance (FC)	Color Temperature (K)	Color Rendering Index (Ra)	Uniformity (U)	Vertical Illuminance	Fixture Count	Poles	
Recreation	20	5000	>70	<3.0	NA	Varies	4	
Pro	70	5000	>80	<1.5	50	Varies	4	
Pro Sports Tech Lighting Systems								
Level	Technology	Illuminance (FC)	Color Temperature (K)	Color Rendering Index (Ra)	Uniformity Infield/ Outfield (U)	Vertical Illuminance	Fixture Count	Poles
Recreation	Low 250w	>22	5000	80-90	<2.5	NA	4	4
Pro	DP2/DP3 LED	>75	5000	95	<1.3	>50	12	4

INDOOR BASKETBALL AND HOCKEY



System Design

High Bay

Whether it's a simple high bay system for a high school gym or a variable high bay design for a collegiate or pro facility, we can adapt our fixtures to any scene. Simple gyms that only need a cost effective solution are typically designed with large spacing and higher intensity lights to cut down on material and installation cost. Higher profile projects typically use a combination of 2-4 output types to create a fading theater effect. The verticals pop for 8k television with the highest CRI available.

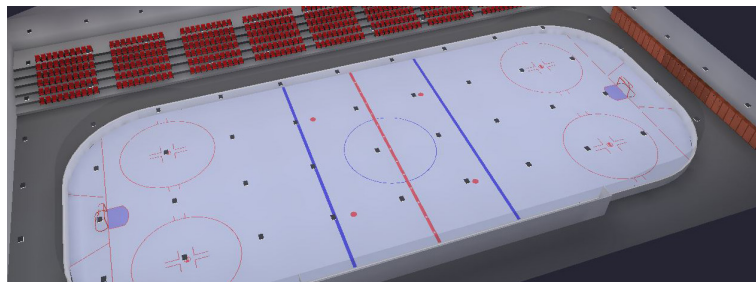
The system can be further integrated into control systems to achieve some fun effects.

Arena

Having designed the most complex arena project in the world we are filled with both simple and complex ideas that can make any arena explode with excitement. Our DIAMONDpro fixture with its modular design allows for placement and aiming using both variable output and optics to maintain a simplistic install but achieve a complex design concept.

Further integrations are limitless featuring RGB static and Dynamic effect lighting, projection systems, scoreboard integrations, infrared activated seat lighting and seat mapping design.

Content subscription packages available.



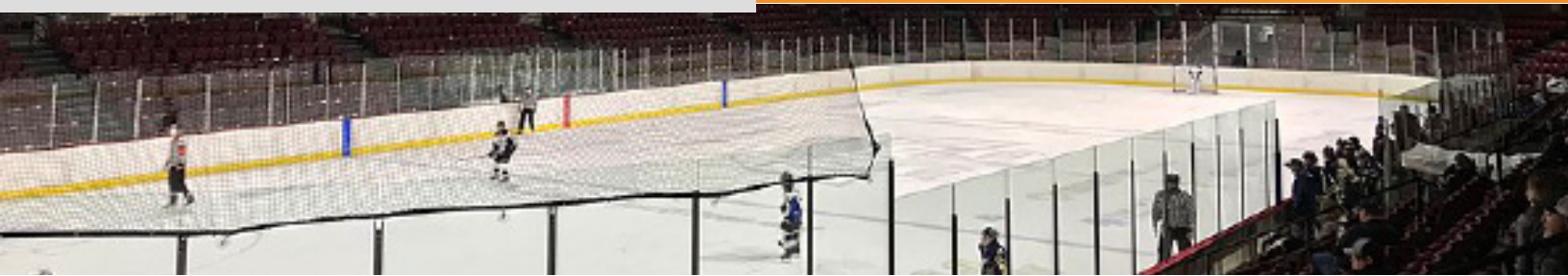
System Advantages

- Modular fixture designs allow for variable outputs and precise aiming while still utilizing a singular design.
- Theater effect or full crowd lighting effects possible.
- Ultra low glare with full cut off optics
- Highest CRI available for crisp 8k resolution
- High lumen per watt increases efficiency and reduces energy costs
- 100,000 hour life reduces maintenance costs to zero
- Instant on (no warm up period) increasing playing time, reducing energy costs and keeping court times on schedule
- 5 year warranty, 10 year warranty on system builds with controls

System Controls

- Fully Dimmable as a group or individually controlled
- System options either 2.4 ghz mesh or Wired/Wireless DMX
- 2 way addressable
- DMX options with theater control board, RGB integration, scoreboard/AV integration, projection system integration
- Remote access with remote work stations
Wifi controller available with remote operation
- Email, text, online chat, phone and on-site support available
- On site system group training
- Static and dynamic scene setups available with system purchase
- Scene and AV content provided either per request or by subscription

INDOOR BASKETBALL AND HOCKEY



EA Technologies - Pro Sports Tech Basketball Systems

Indoor Basketball Lighting Standards

Level	Illuminance (FC)	Color Temperature (K)	Color Rendering Index (Ra)	Uniformity (U)	Vertical Illuminance	Fixture Count
Recreation - Youth	30	4000	>70	<2.5	NA	Varies
High School	50	4000	>80	<2.0	NA	Varies
Collegiate	50	4000	>80	<1.5	NA	Varies
Collegiate TV	100	4000	>80	<1.5	70/40	Varies
Pro - NBA	200	4000	>95	<1.2	150/100	Varies

Pro Sports Tech Lighting Systems

Level	Technology	Illuminance (FC)	Color Temperature (K)	Color Rendering Index (Ra)	Uniformity Infield/ Outfield (U)	Vertical Illuminance	Fixture Count
Recreation	SFD LED	>55	4000	80-97	<1.5	NA	20
HighSchool	SFD LED	>75	4000	80-97	<1.5	NA	30
Collegiate	SFD LED	>110	4000	80-97	<1.5	75/50	40
College - TV	DP2/DP3 LED	>125	4000	90	<1.3	75/50	>60
Pro - NBA	DP2/DP3 LED	>250	4000	97	<1.1	>200/150	>100

EA Technologies - Pro Sports Tech Hockey Systems

Hockey Lighting Standards

Level	Illuminance (FC)	Color Temperature (K)	Color Rendering Index (Ra)	Uniformity (U)	Vertical Illuminance	Fixture Count
Recreation - Youth	50	5000	>70	<2.5	NA	Varies
High School	75	5000	>80	<1.5	NA	Varies
Collegiate	100	5000	>80	<1.3	NA	Varies
Collegiate TV	100	5000	>80	<1.3	100/60	Varies
Pro - NHL - Olympics	200	5000	>95	<1.2	150/100	Varies

Pro Sports Tech Lighting Systems

Level	Technology	Illuminance (FC)	Color Temperature (K)	Color Rendering Index (Ra)	Uniformity Infield/ Outfield (U)	Vertical Illuminance	Fixture Count
Recreation	DP2/DP3 LED	>55	5000	80-97	<2.0	NA	22
HighSchool	DP2/DP3 LED	>85	5000	80-97	<1.5	NA	40
Collegiate	DP2/DP3 LED	>115	5000	80-97	<1.5	70/50	40
College TV	DP3 LED	>150	5000	90	<1.3	110/70	>100
Pro - NHL - Olympics	DP4 LED	>250	5000	97	<1.1	>200/150	>200